

# MALTON SCHOOL

A Specialist Science School



1547

1547



Science

**Information for Year 7  
2020- 2021**

# CONTENTS

INTRODUCTION .....	4
PERSONAL DETAILS.....	5
ARRIVAL AT/DEPARTURE FROM SCHOOL.....	6
ON FOOT.....	6
BY BICYCLE.....	6
BY CAR .....	6
BY COACH .....	6
THE SCHOOL DAY.....	7
LUNCH ARRANGEMENTS.....	8
SCHOOL DINNER MENU.....	9
EVERY DAY YOU NEED TO BRING: .....	10
NOTES.....	10
DRESS AND APPEARANCE.....	11
HAIR.....	11
JEWELLERY.....	11
FOOTWEAR.....	11
THE UNIFORM CODE (Years 7 to 11): .....	12
FOR PHYSICAL EDUCATION AND GAMES .....	14
FOR DRAMA.....	15
YEAR 7 TUTOR GROUPS.....	16
ASSESSMENTS.....	16
SUBJECT TEACHERS .....	17
SENIOR STAFF .....	18
PROBLEMS!.....	19
NO DINNER MONEY?.....	19
MISSED YOUR BUS? .....	19
FEEL ILL? .....	19
LOST SOMETHING?.....	19
LATE TO SCHOOL? .....	19
GOING TO THE DENTIST OR TO THE DOCTOR? .....	19
ANY OTHER PROBLEM? .....	19
LOCKERS .....	20
HOMEWORK CLUB.....	20
SUBJECT OUTLINES .....	21
ART .....	21
COMPUTING .....	22
DRAMA .....	23
ENGLISH.....	24

GEOGRAPHY .....	25
HISTORY .....	26
MATHEMATICS .....	27
MODERN LANGUAGES: FRENCH.....	28
MUSIC.....	29
PHYSICAL EDUCATION .....	30
RELIGIOUS STUDIES .....	31
SCIENCE .....	32
TECHNOLOGY: .....	33
Design Technology.....	33
Food Technology .....	33
YOUTH AWARD.....	34
HOUSE SYSTEM.....	35
POSITIVE DISCIPLINE.....	35
REWARDS .....	36
SANCTIONS .....	37
RULES: RESPECT: Code of Conduct.....	38
CODE OF CONDUCT .....	39
SOME IMPORTANT DOS AND DON'TS .....	40
Bicycles .....	40
Chewing and Bubble Gum .....	40
Cigarettes, E-Cigarettes, Tobacco, Alcohol and Drugs .....	40
Dangerous Articles .....	40
Movement.....	40
Coats.....	40
Medicines .....	40
Correcting Fluid .....	41
Mobile Phones.....	41
Money And Valuables.....	41
ADDRESSES, TELEPHONE NUMBERS.....	43
FINDING YOUR WAY AROUND: .....	44
WEST WING .....	44
EAST WING .....	45
DATES OF TERMS 2020-2021.....	48
ABSENCE LINE .....	48

## **INTRODUCTION**

When you join Malton School in September you will become a member of a mutually supportive and successful community. As an 11 to 18 school we hope the vast majority of you will be with us for 7 years. In that time it is the aim of the school to help you to develop the knowledge, skills and maturity necessary to enter the adult world with confidence. We want you to achieve to the best of your ability; have the opportunities to get involved in new sports and other activities; be able to take on increasing responsibility; make a real contribution to the school and the local community; feel safe, secure and learn how to live a healthy lifestyle; to have a window on the wider world; and, above all to enjoy your time at Malton.

We are all looking forward to welcoming you to Malton School. You will notice some big changes from your Primary School: you may have a longer journey to school; your school day will be longer; from being amongst the oldest children in the school you will be one of our youngest students; you will meet new subjects and be taught each subject by a different teacher; more homework will be set; because we have two buildings you will find you have to walk outside between some lessons. Many things will seem strange at first but we are sure you will soon settle into our school.

Our community bases its life on respect – for people and property and for learning. We have a very simple set of rules but we will insist that all members of the community stick to them. Our Positive Discipline system places a heavier emphasis on rewards and a clear and consistent structure for sanctions so that all students know exactly where they stand. Malton School is a happy and vibrant place. We are looking forward to the contribution you will bring to making Malton School even more successful in the future.

C L DAVISON (Miss)  
Head of Key Stage 3

R J WILLIAMS  
Headteacher

## PERSONAL DETAILS

**Name:** \_\_\_\_\_

**Date of Birth:** \_\_\_\_\_

**Form:** \_\_\_\_\_

**Form Tutor:** \_\_\_\_\_

**Form Room:** \_\_\_\_\_

**House:** \_\_\_\_\_

**Locker Number:** \_\_\_\_\_

**School Telephone Number:** 01653 692828

**School Attendance Number:** 01653 605303

*Please leave a message on this number if your son/daughter is absent from school*

**School email:** [admin@maltonschool.org](mailto:admin@maltonschool.org)

**School website:** [www.maltonschool.org](http://www.maltonschool.org)

## **ARRIVAL AT/DEPARTURE FROM SCHOOL**

In the interest of safety please follow these rules:

### **ON FOOT**

Please enter and leave School via either the West or East Wing.

### **BY BICYCLE**

Bicycles are brought to School at the owner's risk. Please enter and leave School on foot via the West or East Wing and do not ride your bike on School grounds. Walk with your bike along the wing path and park it at the West Wing. Remember to lock it but don't linger in the bike park. Leave your bike in West Wing until it is time to go home. If you cycle to School you have to wear a helmet and we recommend fluorescent clothing. A secure storage shed is provided for bikes but these are brought to School at the owners risk.

### **BY CAR**

Please do not enter the School grounds in a car or turn in the School drive as it can be dangerous. If your driver approaches via Middlecave Drive and turns right into Middlecave Road you can get out onto the pavement outside School.

### **BY COACH**

Coaches stop in the School grounds in front of the West Wing or in the Sports Centre car park. All coaches, apart from those that combine as general service, have insurance cover for named pupils only. You can travel on a coach only with approval from either County or the School Transport Manager, Mrs Lane, so you must not invite another student to travel with you if they are coming to visit you. You need to have your bus pass with you each day if you have been issued with one.

## THE SCHOOL DAY

08.40*	Warning Bell
08.45	Period 1
10.00	1 <sup>st</sup> Break
10.10	Period 2
11.25	2 <sup>nd</sup> Break
11.40	Period 3
12.55	Lunch
13.40*	Warning Bell
13.45	Form Time or Assembly
14.00	Period 4
15.15	End of School – Buses home (Monday, Tuesday, Wednesday & Friday) Or Afternoon Break (Thursday)
15.25	Personal Development Sessions (Thursdays)
16.25	End of School – Buses home (Thursdays)

A prompt start to all lessons is important. You can ensure you are prompt by moving smartly (especially between Wings) and not wasting time in toilets and cloakrooms. Use the toilet before period 1 or during break/lunch-times, not when the bell has gone for your next lesson.

## **LUNCH ARRANGEMENTS**

If you are having a School lunch or packed lunch please join the back of the queue on the classroom side of West Wing corridor.

There is an early lunch pass system for students taking part in lunchtime activities. Anyone abusing this system will have this privilege removed.

In addition to lunchtime, the dining room is open each day from 08.20 – 08.30 for the Breakfast Club, first break from 10.00 – 10.10 and second break from 11.25 – 11.40 for snacks. It is also open from 3.15 – 3.25 on Thursdays (before PDA).

No food or drink may be taken out of the dining room unless it is sealed/wrapped.

If you feel unwell please report to West Wing Reception.



## SCHOOL DINNER MENU

This is a typical menu for a school week. Some items will vary from week to week

Monday	Chicken tikka, rice	£2.10	Summer fruit crumble + custard	£1.00
	Salmon & broccoli bake	£2.10		
	Stuffed courgettes, wedges	£2.10		
Tuesday	Lasagne, garlic bread, salad	£2.10	Strawberry polenta cake + custard	£1.00
	Cajun spiced chicken, rice	£2.10		
	Bean & sweet potato bake	£2.10		
Wednesday	Roast pork, apple sauce	£2.10	Orange, rhubarb & yoghurt fool	£1.00
	Steak & mushroom pie	£2.10		
	Summer vegetable risotto	£2.10		
Thursday	Lamb tagine, cous cous	£2.10	Sticky toffee pudding + custard	£1.00
	Chicken & tomato pasta	£2.10		
	Cheesy Mexican tortilla	£2.10		
Friday	Battered fish + chips	£2.10	Raspberry & lemon cheesecake	£1.00
	Beef stroganoff, rice	£2.10		
	Aubergine, tomato & spinach curry, rice	£2.10		
Everyday	Jacket potato	£1.05	Biscuits	60p
	Jacket potato + 1 filling: cheese/tuna	£1.80	Tray bakes	65p
	Jacket potato + baked beans	£1.45	Hot pudding with custard	£1.00
	Pizza	£1.00	Fresh Fruit	55p
	Salad boxed	£1.70	Yoghurt	70p
	Sandwiches	£1.05 to £1.35	Fruit Pots	90p
	Baguette	£1.75	Pasta Pots	£1.35
	Panini	£1.75		
	Pasta King	£2.10		

£2.50 for a 'Meal Deal'

(main meal/pasta king + one choice from:  
hot pudding / fruit / yoghurt / biscuit / traybake)

Most items are made in the school kitchen,  
including bread and biscuits (baked daily).

**PRICES AND MENU MAY BE SUBJECT TO CHANGE IN  
SEPTEMBER**

## EVERY DAY YOU NEED TO BRING:

**Your:** School Bag  
School Books  
Pens, Pencils, Coloured Crayons, Protractor,  
Compass, a simple Calculator, Ruler and Rubber  
School Planner  
Dinner Money/Dinner

### You need to bring your:

**PE Kit** on: \_\_\_\_\_

**Games Kit** on: \_\_\_\_\_

**French Dictionary** on: \_\_\_\_\_

**Design Technology materials** on: \_\_\_\_\_

**Food Technology apron/materials** on: \_\_\_\_\_

## NOTES

### You must bring a note to show to your Form Tutor if:

You arrive at School after 08.45 or after 13.45  
You have been absent from School  
You need to leave School during the day  
You are unable to do PE or Games  
You are unable to come to School in full uniform

## DRESS AND APPEARANCE

From Year 7 to Year 11 at Malton School students are required to wear uniform. We have tried to make the uniform regulations clear and straightforward, but if you are unsure, ask **before** you buy an item of clothing for School. If there is ever any dispute about what is acceptable for School, the Head's decision is final.

Please dress tidily and look smart. Items of clothing must not be decorated with motifs, badges or insignia or contain extra colours. Baseball caps, other headgear and hoodies (hooded jumpers and sweatshirts) are not allowed to be worn on the school premises. Do make sure **every** item of clothing is marked clearly with your name.

### HAIR

Hair must be unobtrusively styled in naturally-occurring tones. Hair must always be tied back for Physical Education and Games, Design Technology, Food/Creative Design Technology & Science.

### JEWELLERY

One pair of small ear studs may be worn. No other items of jewellery (eg necklets, bracelets, rings) are allowed. During Physical Education lessons **no** jewellery should be worn. Apart from the two ear studs, no body piercing is allowed.

### FOOTWEAR


We recommend sensible footwear which supports your feet, keeps them warm and dry and which will not damage floors. Heels should be no higher than 4cm and footwear needs to be black leather type material. **Trainers may be worn but they must be completely black.**

All items of dress may be purchased where you wish except for items marked \*, which are available **only** from the School Shop.




## THE UNIFORM CODE (Years 7 to 11):

A summary of the new uniform code is given below, the website to place your order is <https://www.theschooluniformspecialists.com> and the school reference when registering individual School Uniform Shop accounts is MAL558.

### Essential School Uniform Items

Item	Further Description	Available from:
Plain black, formal trousers (full length)  OR	Jeans, skin-tight fitting, ski-pants, denim, canvas or jogging suit material are not acceptable	Any supplier with appropriate stock  OR School Uniform Shop ( <a href="http://www.theschooluniformspecialists.com">www.theschooluniformspecialists.com</a> )
Pleated black school skirt  OR	Skirts must be worn no higher than just above the knee.  	School Uniform Shop ( <a href="http://www.theschooluniformspecialists.com">www.theschooluniformspecialists.com</a> )
Plain black long shorts	Shorts must be worn no higher than just above the knee.  	School Uniform Shop ( <a href="http://www.theschooluniformspecialists.com">www.theschooluniformspecialists.com</a> )
Pale blue, formal, long or short sleeved shirt with collar (fitted or non-fitted)		Any supplier with appropriate stock  OR School Uniform Shop ( <a href="http://www.theschooluniformspecialists.com">www.theschooluniformspecialists.com</a> )
Plain dark coloured socks or tights		Any supplier with appropriate stock
Plain black shoes		Any supplier with appropriate stock

### Essential School Uniform Items (contd)

Item	Further Description	Available from:
School tie		School Uniform Shop ( <a href="http://www.theschooluniformspecialists.com">www.theschooluniformspecialists.com</a> )
School Blazer (fitted or non-fitted)		School Uniform Shop ( <a href="http://www.theschooluniformspecialists.com">www.theschooluniformspecialists.com</a> )
Craft Apron (Navy Blue)		Any supplier with appropriate stock  OR  School Uniform Shop ( <a href="http://www.theschooluniformspecialists.com">www.theschooluniformspecialists.com</a> )

### Optional School Uniform Items


Item	Further Description	Available from:
Sleeveless school jumper	As an option to wear under the blazer in cold weather	School Uniform Shop ( <a href="http://www.theschooluniformspecialists.com">www.theschooluniformspecialists.com</a> )
A waterproof coat or jacket	Denim or leather jackets are not allowed	Any supplier with appropriate stock

An outdoor coat or jacket, suitable for cold and wet weather, will be needed as students often move between the two school wings when lessons change. Denim or leather must not be worn.

- House Ties, Half-Colours and Full Colours will be issued to students as an award in recognition of their service to House or School.

## FOR PHYSICAL EDUCATION AND GAMES

### Essential Physical Education and Games Items


Item	Further Description	Available from:
Unisex or Fitted Blue Polo Shirt		School Uniform Shop ( <a href="http://www.theschooluniformspecialists.com">www.theschooluniformspecialists.com</a> )
Navy Blue Shorts or Skort		School Uniform Shop ( <a href="http://www.theschooluniformspecialists.com">www.theschooluniformspecialists.com</a> )
Blue Reversible Games Jersey <b>OR</b> ¼ zip Top <b>(or both)</b>	 <b>OR</b>	School Uniform Shop ( <a href="http://www.theschooluniformspecialists.com">www.theschooluniformspecialists.com</a> )
Pale blue football or hockey socks		Any supplier with appropriate stock  OR School Uniform Shop ( <a href="http://www.theschooluniformspecialists.com">www.theschooluniformspecialists.com</a> )
Mouth Guard		Any supplier with appropriate stock  OR School Uniform Shop ( <a href="http://www.theschooluniformspecialists.com">www.theschooluniformspecialists.com</a> )
Trainers	Trainers (non-marking - suitable for indoor use)	Any supplier with appropriate stock
Football Boots	Hockey/Football boots with <b>moulded plastic studs</b> only ( <u>screw in studs and blades are <b>NOT</b> allowed</u> )	Any supplier with appropriate stock
White sports socks		Any supplier with appropriate stock
Shin Pads		Any supplier with appropriate stock

## Optional Physical Education and Games Items

Item	Further Description	Available from:
Training Pants – Navy Blue  <b>(Optional in Winter)</b>		School Uniform Shop ( <a href="http://www.theschooluniformspecialists.com">www.theschooluniformspecialists.com</a> )
Leggings – Navy Blue  <b>(Optional in Winter)</b>		School Uniform Shop ( <a href="http://www.theschooluniformspecialists.com">www.theschooluniformspecialists.com</a> )
Fingerless gloves		

## FOR DRAMA

### Essential Physical Education and Games Items

Item	Further Description	Available from:
Plain black school crested drama t-shirt  OR  (or a plain black t-shirt)		School Uniform Shop ( <a href="http://www.theschooluniformspecialists.com">www.theschooluniformspecialists.com</a> )  OR  Any supplier with appropriate stock
Plain black leggings, jogging or tracksuit bottoms		Any supplier with appropriate stock
Trainers (non-marking for indoor use) or jazz shoes/dance trainers		Any supplier with appropriate stock

## **YEAR 7 TUTOR GROUPS**

7 Carlisle  
7 Fitzwilliam  
7 Holgate  
7 Tudor  
7 Willoughby

Students will be notified which Tutor Group they have been given at a later date, when we have received all the responses to our online Transition Form and finalised the groups. You will also be informed of the tutors selected to lead these groups once these decisions have been finalised.

Year 7, as far as is possible on the timetable, will be taught in five broad ability sets for most of their lessons. These will be based on Primary School assessment at the end of Key Stage 2. There will be regular reviews of placing and movement between groups will be possible. Technology lessons (Design Technology and Food Technology) will be in smaller groups to ensure improved health and safety provision, with half a year of Design Technology and half a year of Food Technology

## **ASSESSMENTS**

**Assessments:** On three occasions during the year assessments will be sent out which will give levels and grades for attainment, attitude to learning and behaviour.

Year 7 will be continually assessed throughout the year to ensure they are correctly set for their ability.



**SUBJECT TEACHERS**

**TUTOR GROUP \_\_\_\_\_**

Art \_\_\_\_\_

Computing \_\_\_\_\_

Design Technology: \_\_\_\_\_

English \_\_\_\_\_

Food Technology \_\_\_\_\_

French \_\_\_\_\_

Geography \_\_\_\_\_

History \_\_\_\_\_

Mathematics \_\_\_\_\_

Music \_\_\_\_\_

Physical Education \_\_\_\_\_

Religious Studies \_\_\_\_\_

Science \_\_\_\_\_

Youth Award \_\_\_\_\_

## SENIOR STAFF

Head	Mr Williams
Deputy Head	Mr Fenwick
Assistant Head	Mr Steel
Assistant Head	Mrs Wilson
Head of Key Stage 3	Miss Davison
Assistant Head of KS3	Mrs Beal
Assistant Head of KS3	Miss Loughran
Head of Inclusion	Mr Else

## SOME OTHER STAFF YOU WILL MEET

<p><i>West Wing</i></p> <p>Mrs Cooper: Headteacher's PA          Mrs G Harrison: Reception          Ms Abbott: School Shop and Reprographics          Ms Richardson: Finance Officer          Mrs Guest: Finance Assistant          Mrs Swindells: Admin Assistant</p>	<p><i>East Wing</i></p> <p>Mrs Cooke: Reception and Attendance Officer          Mrs Mills: Data Manager</p>
<p><i>Facilities Manager</i></p> <p>Mr Rowley</p> <p><i>Site Manager</i></p> <p>Diane Thackray</p>	<p><i>Learning Managers</i></p> <p>Ms Thompson          Mrs Witty          Mr Olsen          Mrs Coulbeck          Dr Fox-Haw          Miss Coyne</p>
<p><i>School Meals</i></p> <p>Mrs Gordon</p>	

## **PROBLEMS!**

### **NO DINNER MONEY?**

Report to the West Wing reception desk at 12.55 pm.

### **MISSED YOUR BUS?**

Report to the West Wing reception desk at once.

### **FEEL ILL?**

Report to the West Wing reception desk or to the East Wing Reception if you are in the East Wing.

### **LOST SOMETHING?**

1. Look for it .
2. Check Lost Property
3. Tell your Form Tutor

### **LATE TO SCHOOL?**

Report to the East/West Wing reception desks for a mark in the Register.

### **GOING TO THE DENTIST OR TO THE DOCTOR?**

Bring a note to School to show to your form tutor and have it signed. Report to the appropriate Reception/Wing Office with your letter when you leave School and sign in when you return to School.

### **ANY OTHER PROBLEM?**

See your Form Tutor.

## LOCKERS

Lockers are available in the School. There are a few important rules to be observed:

1. No stickers, drawings or graffiti may be placed on locker doors or fastened to the compartment interior. Blu Tack may be used to hold items in place inside the locker.
2. **No food may be stored in lockers overnight.**
3. Lockers must be emptied and left unlocked at the end of each half term to enable cleaning.
4. Keys will be issued on payment of £6 per year. Students on free school meals will pay £3 per year.
5. Lost keys can be replaced at a charge of £5.
6. All keys must be returned to the West Wing Reception at the end of the Summer Term each year.

## HOMEWORK CLUB

We provide a homework club on Monday, Tuesday and Wednesday after school. It starts at 3.15 and finishes at 5.00 pm, in Learning Support at the West Wing. There are at least two members of staff on hand each night to offer help and guidance.

# **SUBJECT OUTLINES**

## **ART**

Creativity, self-expression and experimentation are embedded within the heart of the Art Department.

Through Years 7 to 9, we seek to develop the skills and confidence which will enable these goals to flourish. We seek to develop your intellectual and imaginative thinking and your ability to make informed responses to the work of others in a variety of artistic styles and traditions. Our teaching staff are practising artists and are energetic and enthusiastic in introducing you to a wide range of influences. History of Art is taught throughout the course.

You will cover three themes during each year in Years 7/8 which explore the assessment objectives of:

- Research
- Refine
- Record
- Evaluate

You will learn to work across different disciplines using a variety of materials: drawing and painting, photography, digital art, image manipulation and more.

Creative use of a sketchbook full of information and ideas will be an important part of your work in Art. You will need to complete relevant homework tasks related to your class work on a fortnightly basis. We feel strong observational drawing skills are vital to becoming a successful artist and this is inherent in our teaching. Extra-curricula art sessions are available to all students wishing to further develop their skills. As you progress through the course, learning the fine art skills which will underpin your work, we will encourage experimentation to develop your own individual style which will allow you to develop your ideas further at GCSE Level/A-Level.

## **COMPUTING**

Pupils will get one lesson of Computing per week in Year 7.

During the year, pupils will explore the different components that make up a computer and how they all work, decomposition and algorithms, programming computer games with Microbits, basic coding using Python, binary numbers, how a search engine works, spreadsheets and much more!

They will also complete a unit of work on e-safety.

## **DRAMA**

Drama is all about telling stories; in Year 7 students will learn the basics of developing a narrative. This will include creating and developing characters and using drama techniques to communicate narrative and emotion.

Students in KS3 are assessed on four key areas:

- Creating
- Performing
- Evaluating
- Understanding

Learning is structured around the development of transferable skills such as team work, self-discipline, creative thinking and social interaction. Drama also aims to promote enjoyment in learning and develop confident individuals.

## ENGLISH

Work in English lessons involves developing skills in the main areas of Reading, Writing, and Speaking and Listening. You will read a range of different types of fiction, including stories, plays and poetry, as well as a selection of non-fiction texts, including articles and leaflets. Not only will you study them, but you will have opportunities to write your own too, working creatively whilst trying to keep your writing accurate. There will be times when you will be expected to work independently and times when you will work with others, learning from your peers and developing skills of cooperation. You will make full use of your iPads, for example using them for creative work and to conduct research.

Good work and effort will be rewarded with house points and commendations and you will receive regular verbal and written feedback to help you to improve further.

You will also follow a reading program called Accelerated Reader. You will read a range of texts independently and take quizzes to assess your understanding. There will be plenty of rewards and competition amongst teaching groups and houses to see who will be the reading champions of year 7.

Finally, there are a number of clubs that you will have the opportunity to join. These include books groups, drama clubs and library-based activities. You will also be invited to take part in competitions. It's going to be a busy year, but also a rewarding one!



## **GEOGRAPHY**

In your Geography course in Year 7 you will study ideas, knowledge and skills to do with physical and human geography. These will include weather and climate, world sport, how settlements develop and rivers and flooding. You will also consider environmental issues and how our planet is changing. You will conduct a fieldwork investigation into how Malton's town centre is changing and learn how to use maps and graphs to show and analyse what you have discovered. Your work will be assessed regularly through your homework projects, classwork and by in class tests.

## HISTORY

The first 4 weeks will be spent studying 'Historical Skills'. These are the tools you will need to be a successful historian throughout your time at Malton School. Topics include:

- Fact & opinion
- Cause & consequence in History
- Primary & secondary sources
- Chronology

The rest of year 7 will be spent covering the following topics:

- What was life in Britain before 1066?
- Why did William win the Battle of Hastings?
- How far did England change under William the Conqueror?
- How powerful were Medieval Monarchs?
- What was medieval life like for ordinary people?
- Why did people go on Crusade?
- Where did the Tudors come from?
- Who were the Native Americans?

Your homework will involve either written work, reading, research or preparing for class tests. You will also be encouraged to read a wide variety of topic books. You will be assessed six times during the year.

## **MATHEMATICS**

During Year 7 your work will cover: Number, Algebra, Geometry, Ratio and Proportion, Statistics and Probability.

Number work will include problem-solving, the relationship with fractions, decimals, percentages and ratios, powers and negative numbers.

Algebra involves graphs of different kinds, the use of brackets, equations and formulae.

Work on Geometry includes symmetry, interior and exterior angles, transforming shapes and properties of shapes.

In Mathematics lessons you will do lots of different activities. Throughout the year you will work on your own, in pairs or in groups investigating mathematical problems. In your lessons you will need a pen, a pencil, a ruler, a scientific calculator, a protractor and a pair of compasses. I-Pads are used a lot in Maths lessons and the students will regularly use the graphing app Desmos as well as websites such as [www.transum.org](http://www.transum.org) and [www.hegartymaths.com](http://www.hegartymaths.com) which is where Maths homework will be set from.

You will be put into a group at the start of the year according to your previous achievement, but these groups all work on the same topics. Your progress will be assessed in relation to the National Curriculum throughout the year by your teacher, by a number of short assessment tests during lesson time and then by a longer examination near the end of the year.

## **MODERN LANGUAGES: FRENCH**

In Year 7 you will learn to communicate with and understand people from French speaking countries. Your teacher will therefore speak to you mainly in French. You will take part in a variety of tasks in order to practise your listening, speaking, reading and writing skills. The activities involve pair and group work, working independently, the use of iPads and dictionary skills.

You will learn to describe yourself and others, discuss your hobbies and express your opinions, talk about food and healthy eating, give opinions on clothes and fashion and learn about festivals and celebrations in the French-speaking world. You will also learn lots of grammar and lots about the cultural aspects of France and other French speaking countries.

You will recap what you have learned at primary school during the first few weeks but it would be a good idea to spend some time looking again at greetings, numbers and colours (and anything else you learnt) before you start in September.

Parents are asked to encourage our students to undertake all learning homework conscientiously as the memorising of vocabulary, verbs and structures is vital for good progress.

## MUSIC

The Year 7 music course is designed to involve all students from the outset, with an emphasis on practical music-making whilst incorporating theory, notation and listening skills. Starting with the basic elements of music, the students work in groups to create a composition that demonstrates the elements of music. Classroom instruments involve a variety of percussion instruments, electronic keyboards and guitars. After an introduction to rhythm and stave notation, students begin engaging with the instruments in topics such as popular music and the blues. This will lead to composing their own music based on the notes and rhythm used in popular songs.

In the final term students work on making imaginative music for film. They investigate the sounds and techniques that make music scary, tense, relaxing etc. The year consists of students playing a range of chords, learning the techniques of playing guitar, keyboards, bass and drums and then working in small groups to learn and perform a pop song. Singing and listening work is undertaken at regular intervals throughout the course to reinforce the musical experience. Assessment is by both teacher and student and will be used to inform the final year assessment. Performance, Composition and Listening work will all be taken into account and where applicable, students own work will be recorded and assessed.

A wide variety of peripatetic music lessons are available and all students are given the opportunity to sing/learn an instrument at this stage. These students are welcome to use their instrument in classroom music lessons if desired. There are lots of extra-curricular music experiences to be had. These include Jazz Band, Soul Band, Orchestra and Malton School Choir. The Year 7 Music curriculum will be underpinned by the use of music technology using the iPads.

## **PHYSICAL EDUCATION**

Across Key Stage 3 you will participate in the following sporting activities - Athletics, Badminton, Basketball, Cricket, Dance, Gymnastics, Handball, Health Related Fitness, Hockey, Football, Netball, Multi Skills, Rounder's, Rugby, Table Tennis, Tennis and Softball.

The initial aim is clearly to provide a varied and enjoyable programme from which you will gain areas of skill and interest on which to build. All work is based on a gradual and phased introduction of activities which may be largely unfamiliar to new entrants to secondary schooling. You will develop knowledge and understanding on Healthy and Active lifestyles and the benefits of physical activity as well as improving attributes such as teamwork, communication and problem solving.

Work within Physical Education classes will incorporate various teaching methods involving individual, small group or large group work. You will enjoy interactive feedback and dialogue with teachers through the use of iPads as well as using video and images to analyse your sporting performance. The groups may be mixed ability or like ability. Each physical activity will be operated on a fixed time unit at the end of which you will be assessed against our new assessment matrix.

## **RELIGIOUS STUDIES**

Religious Studies is a subject that allows students to explore important spiritual and moral questions, as well as educating students about the main forms of religion in our society.

### **In Year 7 we study 3 main topics:**

#### **Do we need to prove God's existence?**

How important is the idea of proving or disproving God? Why do some religions believe in God(s) and some do not? Why do people experience God in different ways?

#### **Does religion help people to be good?**

Does having a faith make a difference on how we live our lives? Does religion always lead people to be good? What codes of behaviour do we live by?

#### **How can people express spirituality through music and art?**

What does it mean to be spiritual? How can music and art contribute to a community? How do religions express their faith through art?

You will expand your knowledge and understanding of these faiths, while exploring your own personal views and beliefs. Written assessments will be done at the end of each module.

## SCIENCE

During Year 7 you will use the science you have learnt at Primary School and will have the opportunity to develop your knowledge and understanding in the areas of biology, chemistry and physics. Some of the topics you will study are listed below:

- Cells
- Reproduction
- Environment
- Acids and Alkalis
- Chemical Reactions
- Waves
- Forces
- The solar system

A large proportion of the year will involve the continued development of practical skills. This will involve carrying out a variety of assessed practical tasks throughout the year.

These may involve

- Investigating what happens when different metals and an acid react
- Investigating how to purify salt
- Investigating the structure of a cell using a microscope

Assessment will involve a range of different activities including short topic tests and longer tests based on a combination of topics. Half way through Year 8 you will be tested on the topics that you have covered so far as well as some data comprehension and analysis.



## **TECHNOLOGY:**

### **Design Technology**

Year 7 is an introduction to the workshop environment, including a health and safety briefing on all machinery. Students will study Design Technology for half a year in which they will design and make a product in a combination of materials using a variety of equipment and processes, including machine tools.

Practical projects are supported by design folders that require an understanding of the properties of materials and also allow students to develop their design skills using freehand drawing and technical drawing techniques. There is also a requirement to appreciate famous designers and design styles in order to incorporate this into their own work.

Homework exercises include research and analysis of products, with evaluations of the final practical outcome at the end of a project.

### **Food Technology**

Food Technology will be studied for one and a half terms in Year 7. Our aim is to give students the confidence and independence to work safely with a range of equipment to produce a variety of food products. At the same time we will be demonstrating and/or explaining key methods in food preparation to make simple, tasty dishes. Students will learn knife skills and gain experience in using the grill, oven and hob.

As this subject is part of Technology, the work completed will also enable you to design ideas; make up these ideas and once made, to test and question how successful you were.

It is expected that ingredients are provided from home based on the ingredients list provided which will be available to students via Showbie. Students will rotate between Design Technology and Food Technology throughout their time in Year 7.

## YOUTH AWARD

Year 7 will be taking part in the Young Leaders Award this year during Citizenship. We are really excited to be involved in this programme which has been designed and written by the Archbishop of York Youth Trust. For more information visit [www.abyyt.com](http://www.abyyt.com).

The Young Leaders Award aims to equip young people to *be the change they want to see* in their local communities, and through a number of interactive lessons and practical challenges our pupils will be involved in serving their community and making a difference. The award is currently available at Key Stage 2, 3 and 4 and there are thousands of students across the North of England taking part in changing their communities for the better.

The programme will start in September and will run for the full year. We look forward to all that our pupils do to serve the local community as well as undertaking personal and school based challenges. There may be opportunities for parents and family members to get involved in the community action projects that will take place later in the year, we will be in touch with more details nearer the time.

## HOUSE SYSTEM

The work you do in School will allow you to earn house points for your form and house. Throughout the year there will be lots of different house events and competitions. Some competitions will be linked to sport. By getting involved in house events and competitions you will develop new skills and have some fun too.

A rewards system will operate throughout the year. You will be able to gain and collect house points that will convert to certificates which you will be able to keep.

## POSITIVE DISCIPLINE

At Malton School we expect good behaviour at all times. This is vital so everyone enjoys school and makes good progress.

To ensure this happens Malton School operates a system of 'Positive Discipline'. Students are **rewarded** when they do well and there are **sanctions** when rules are not followed.

The planner is central to this system. All students **must** bring their planner to school each day and it must be open on the desk in all lessons. If the planner is not available students will be placed in isolation until the planner can be found or is brought into school.

## REWARDS

Good work and behaviour around the school is rewarded with stamps which are placed in your planner.

10 stamps = 1 house point

The number of stamps you gain each week is recorded by your Form Tutor.

House points awarded will count towards your House total. A trophy is awarded each December to the House which gains the most house points.

Certificates are awarded to students gaining the following number of house points.

Bronze	=	50 house points	Silver	=	100 house points
Gold	=	150 house points	Platinum	=	200 house points
Ruby	=	250 house points	Diamond	=	300 house points
Pearl	=	400 house points			

Governor Special Award = 500 house points.

Commendations and postcards home are also awarded on a termly basis.

At the end of every half term we have an 'Awards Assembly' where there is the opportunity to win a prize for such things as no negative comments, 100% attendance and no lates.

There will be termly reward events for students who have gained the required number of house points and haven't been in isolation or excluded.

Full details of Rewards and Sanctions used in school are displayed in each classroom and in your planner. The system is explained using three triangles.

## **SANCTIONS**

If you don't keep to the rules in school there will be a sanction. The sanctions are used in lessons and around the school as shown on the pyramids on the following pages.

If you break a school rule a comment will be placed in your planner. For every 4 negative comments in your planner during a week you will serve an after school detention. The date of this detention will be stamped in your planner. After school detentions take place between 3.20pm and 4.20pm on Tuesdays and Wednesdays.

## **RULES: RESPECT: Code of Conduct**

All our rules are based on respect for people, learning, safety and property. By being polite and helpful, by taking care not to make it more difficult for anyone else to work, by remembering your responsibility for your own and everyone else's safety and by caring for the buildings and furniture, equipment and books and never touching anyone else's property you will play your part in making sure that Malton School remains a happy, purposeful and successful community.

Our Code of Conduct is displayed in every classroom, in your homework planner and is shown on the following page:

# CODE OF CONDUCT

## **In Class**

Have your planner, correct books and equipment.  
Concentrate hard and take pride in your work. Do your best!  
Do not shout out or distract others from doing their best.  
Contribute fully to the lesson and respond to suggestions for improvement from staff.  
Record all homework set and complete it on time, to the best of your ability.

## **Around School**

No litter. No chewing gum. Show respect for school environment.  
Follow staff instructions, first time, every time.  
Be polite, co-operative and respectful with adults and each other at all times.  
Report any bullying at once to a member of staff.  
Be courteous and polite, showing good manners and using appropriate language at all times.

## **Routines**

Wear school uniform correctly at all times.  
Always arrive at lessons and registration on time. Cover all absences and late arrivals with a parental or staff note.  
Walk on the left in corridors, queue quietly and sensibly.  
Remain silent during fire or emergency evacuation procedures.  
Report the presence of any unidentified person to a member of staff immediately.

## **SOME IMPORTANT DOS AND DON'TS**

### **Bicycles**

Never touch or ride another pupil's bike **with** or **without** the owner's permission. You may go into the bike parks only to park or collect your own bike. Bikes are brought to School at the owner's risk

### **Chewing and Bubble Gum**

Chewing and Bubble Gum are not allowed on the School site.

### **Cigarettes, E-Cigarettes, Tobacco, Alcohol and Drugs**

Tobacco can seriously damage your health. You are not allowed to smoke on the School campus, near the School or when you are on any School visit. Any cigarettes, tobacco, alcohol or illegal drugs will be confiscated.

### **Dangerous Articles**

If you bring to School fireworks, matches, lighters or any other item likely to endanger the safety of others you will be punished and the item(s) will be confiscated and held for your parent/guardian to collect. Aerosols are not allowed in School.

### **Movement**

You must move about the School quietly and remember never to run in any building. Always walk on the left. If you are moving between Wings use the path provided in the School grounds.

### **Coats**

Please take into the classroom with you. Do not leave valuables or any money in the cloakroom. You must not wear your coat in the classroom.

### **Medicines**

If you have to bring tablets or medicines to school to take during the day, please leave them with Reception. You must bring a letter to explain why you are taking the medication, the dosage and when it is to be taken. If you need to take medication you must report to Reception at the correct time and collect your medication at the end of the school day.



## **Correcting Fluid**

Please do **not** bring correcting fluid - spills are very difficult to clean.

## **Mobile Phones**

Although we do not recommend you bring a mobile phone to School we do realise they can be useful if you have matches after School or need to contact home once you have left School.

If you bring a mobile phone to School it **must be** turned off and out of sight during the entire School day (08:45-15:15) except at break/lunch-times on the field. If your phone rings or you are found to have used it during the School day it will be confiscated. Phones are brought to School at your own risk and should never be left unattended in bags in a cloakroom.

## **Money And Valuables**

Please keep money in a secure pocket, purse or locker and **never** leave it in a bag or a coat. Try to bring only the money you really need for that day. Radios, MP3 players, iPods and other expensive or valuable items must not be brought to School. If you ever should need to bring a larger amount of money or any valuable item to School please make arrangements to leave it with the School office during the day.



## **ADDRESSES, TELEPHONE NUMBERS**

The School's postal address is:

Malton School  
MALTON  
North Yorkshire  
YO17 7NH

Tel No: (01653) 692828

School Attendance Line Tel: (01653) 605303

Email: [admin@maltonschool.org](mailto:admin@maltonschool.org) Website: [www.maltonschool.org](http://www.maltonschool.org)

The Chair of the Governing Body is:

Mr R Anson  
c/o Malton School

The County Director of Education is:

Stuart Carlton  
County Hall  
NORTHALLERTON  
North Yorkshire  
DL7 8AE

Tel No: (01609) 780780

Fax No: (01609) 778611

County Hall:

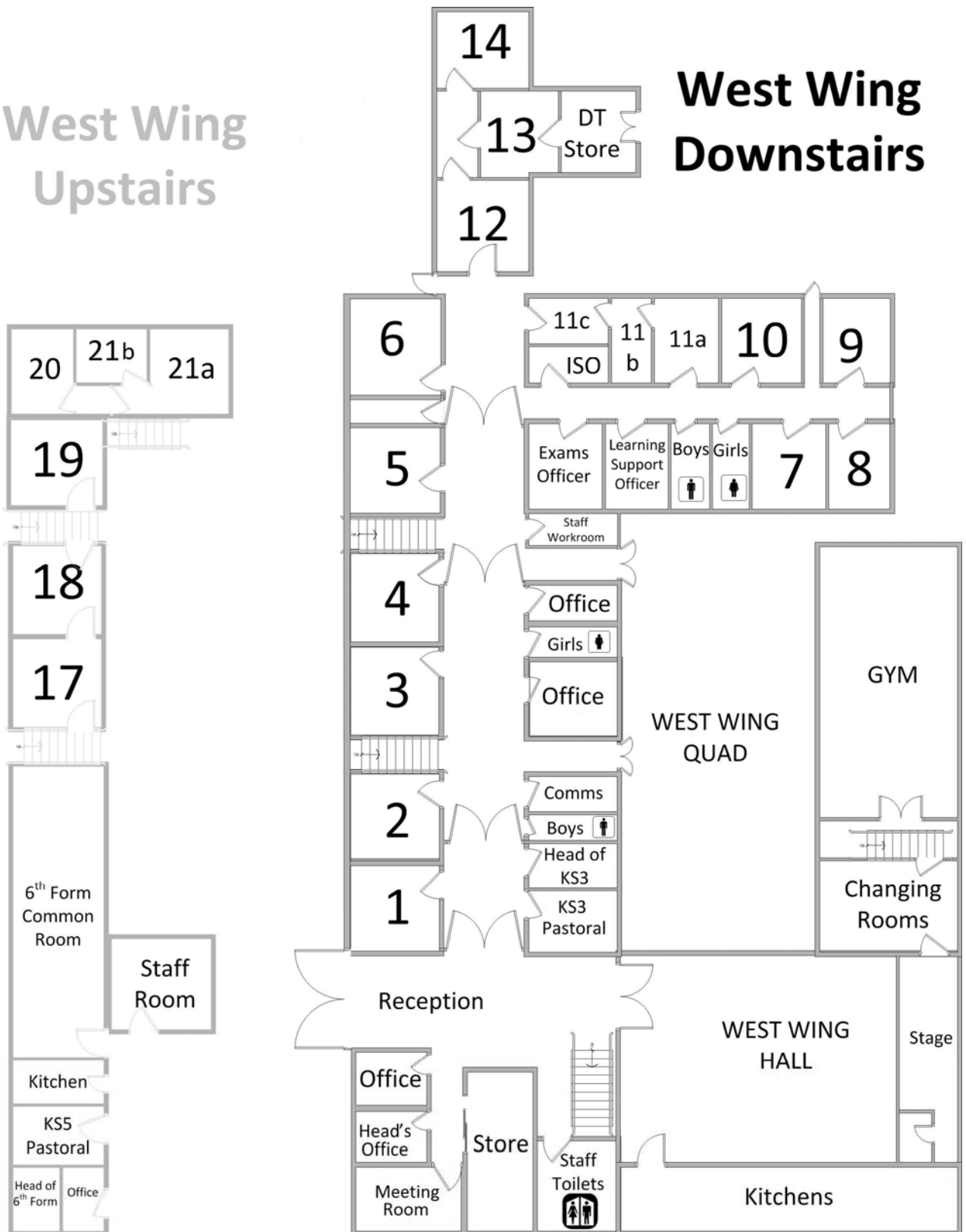
Tel No: (0845) 0349494

# FINDING YOUR WAY AROUND:

## WEST WING

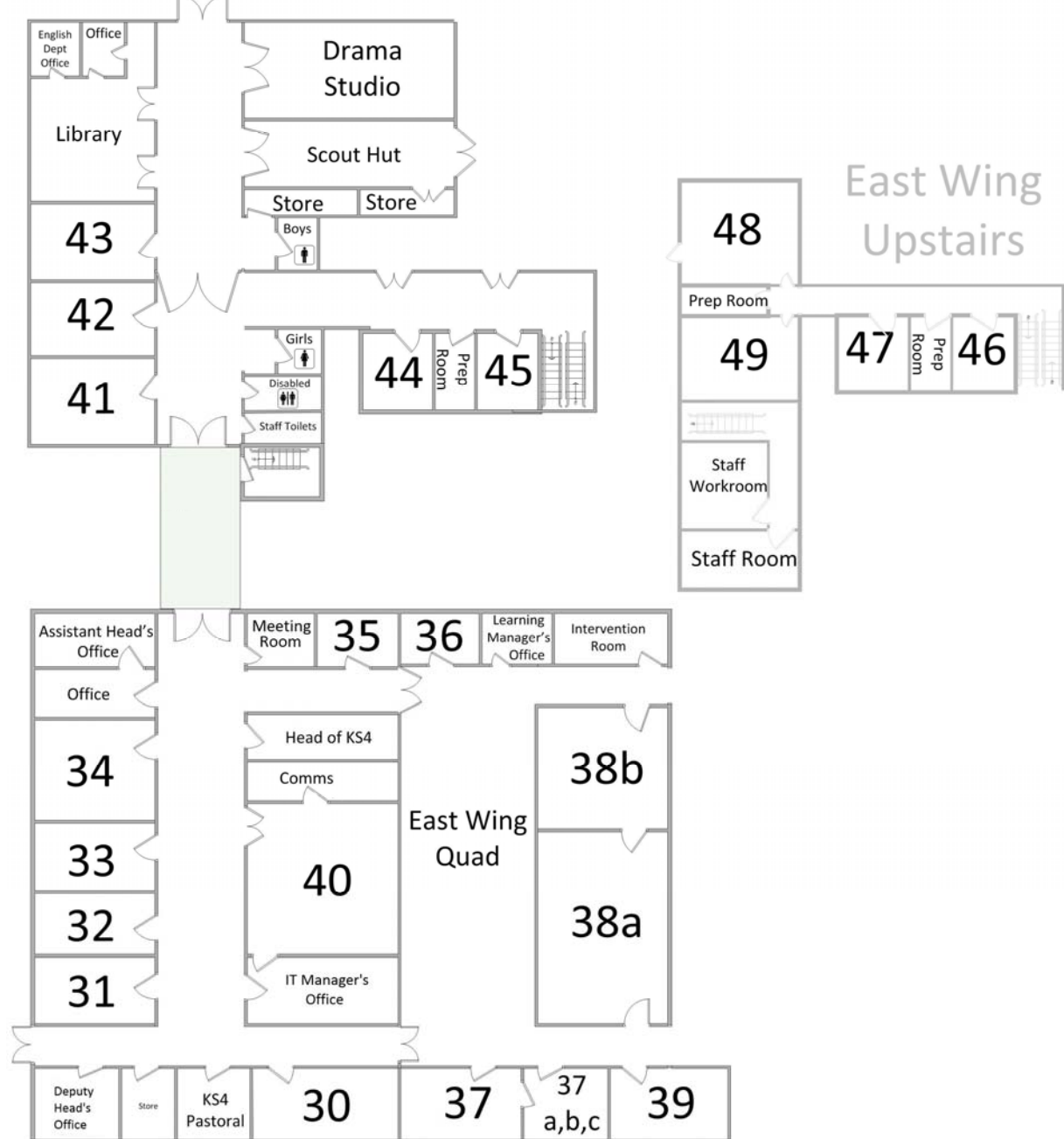
West Wing  
Upstairs

West Wing  
Downstairs



# EAST WING

## East Wing Downstairs







## DATES OF TERMS 2020-2021

Please note, these dates are subject to change.

<u>First Day</u>	<u>Last Day</u>	<u>Day Closures</u>
W 09 September	F 23 October	M 07 September T 08 September
M 02 November	F 18 December	
M 04 January	F 12 February	
M 22 February	F 26 March	
M 12 April	F 28 May	<i>Bank Holiday: M 03 May</i>
M 07 June	M 26 July	

## ABSENCE LINE

In the event of any absence we ask that parents/carers ring the Malton School Absence Line:

**01653 605303**

This is a 24-hour facility which is listened to on a regular basis. It would be appreciated if you are able to ring before 9.00 am. You will be asked by a recorded message to leave the name of the student concerned and their form group.

Should we not receive a phone call we will contact parents/carers of absent students during the course of the morning – we will ring work numbers if contact cannot be made at home.